



Revolutionizing energy management for Curaçao

Presentation 'Sociaal Economische Raad Nederland'

Date: March 7, 2025

Rudolf Garmes

CONTENT

- ▶ Introduction to Aqualectra
- ▶ Current landscape
- ▶ Revolutionizing energy management
- ▶ Final remarks and questions



Introduction to Aqualectra



What we do

Aqualectra is the sole producer and distributor of water and electricity on the island of Curaçao.

100% Government owned and cognizant of the responsibility we carry, we are in constant search to increase our reliability, affordability and sustainability for the benefit of the people of Curaçao.

The background of the image is a topographic map with light gray contour lines on a white background. Scattered across the map are numerous small, semi-transparent markers in yellow and green. The text is centered in the middle of the image.

**“a vision for our island rooted in
affordability, sustainability and
reliability, silver lined by
innovation”**

COMPANY PROFILE



PRODUCTION

983 GWh
14.5 million m³



PRODUCTION FACILITIES

4 Diesel plants
4 Wind parks
2 Water plants



EMPLOYEES

600 Employees
Average age: 47
Average tenure: 15



CUSTOMERS

88.855 Electricity customers (36.963 prepaid)
1062 PV customers
96.338 customers

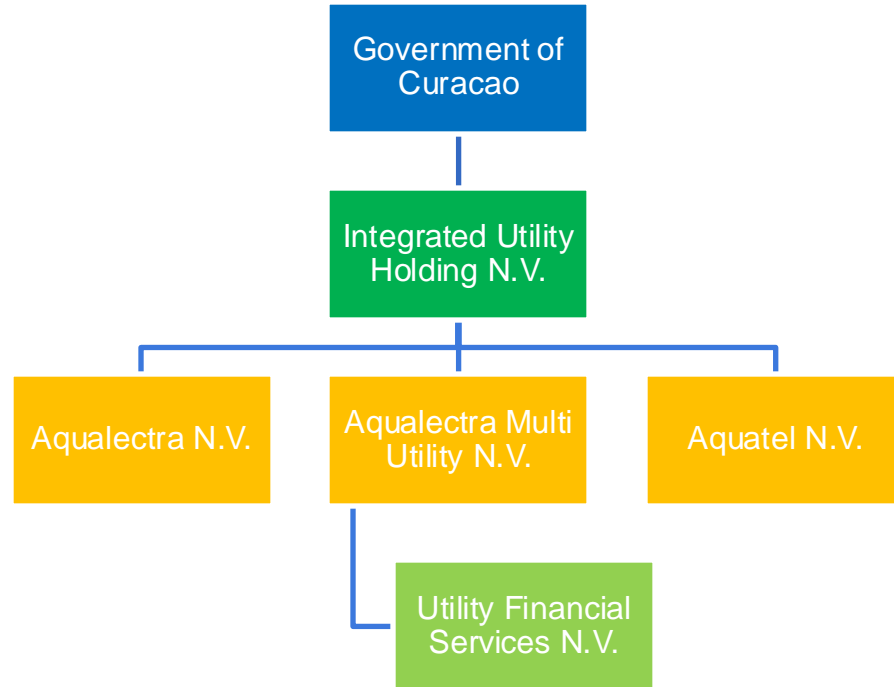


QUALITY AND CREDIT

ISO 9001
ISO 14001
ISO 17025
S&P rating: BBB- / stable outlook



Company Structure



Current landscape



Economic developments, Climate and Infrastructure

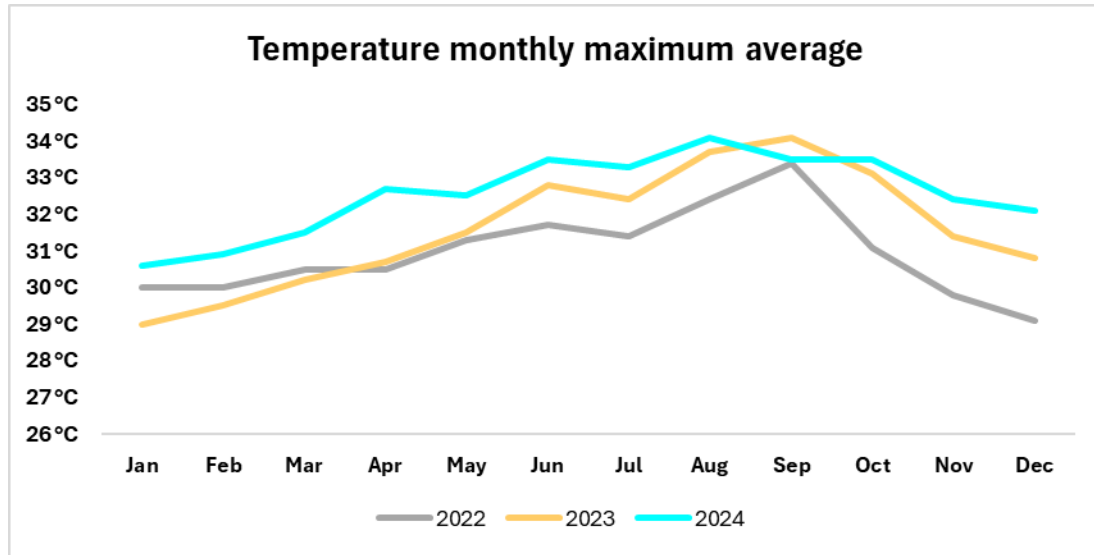


AQUALECTRA

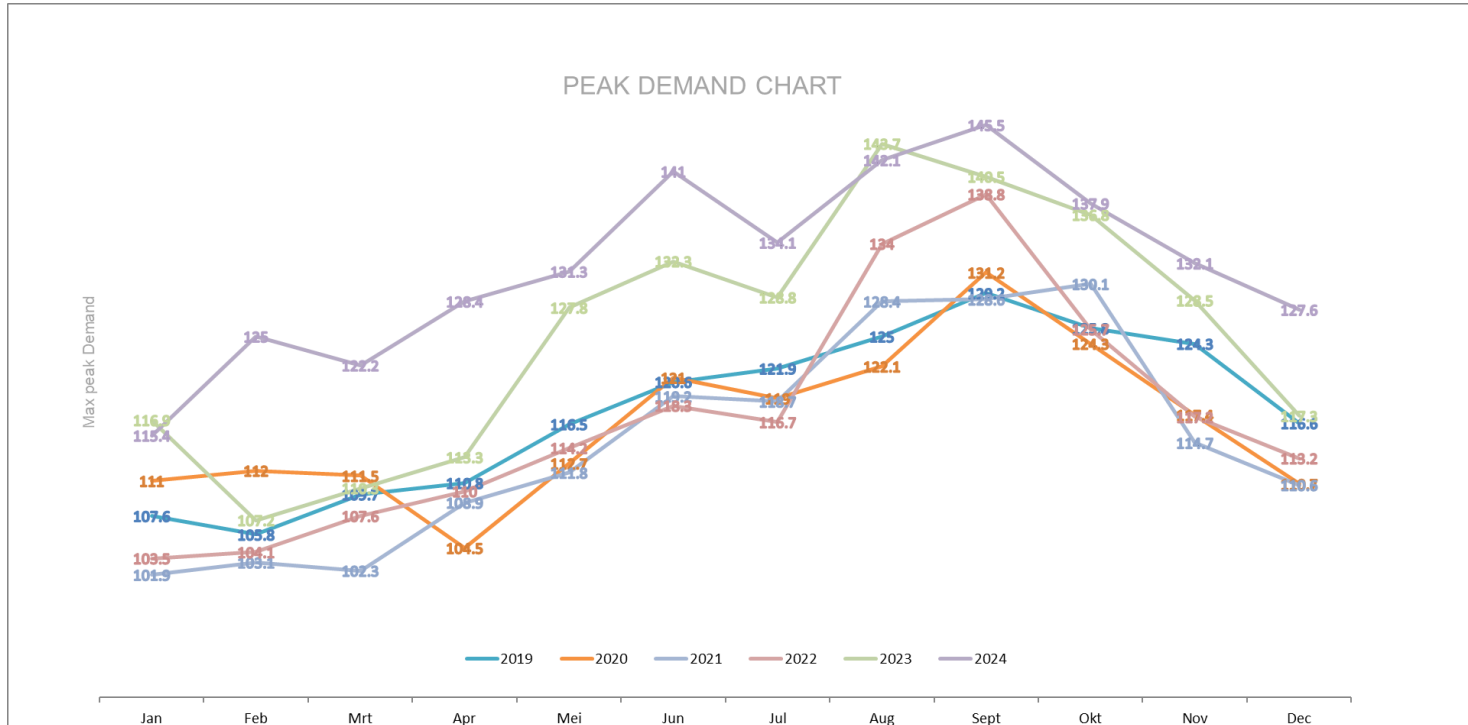
Economic changes



Climate changes



Peak demand



Peak demand

	Jan	Feb	Mrt	Apr	Mei	Jun	Jul	Aug	Sept	Okt	Nov	Dec
2013	107.8	108.6	110.3	114.8	118.2	119.1	115.6	129.4	126.1	124.2	113.2	117.5
2014	111.6	113.9	116.8	114.9	121.4	124.1	118.7	127.2	125.3	124	116.2	120.3
2015	111.8	116	110.3	116.4	116.7	118.8	115.2	124.9	130	132.1	121.9	124.9
2016	110.4	109.6	116.3	121.5	123.7	119.2	120.8	126.3	125.7	133.4	126.8	117.1
2017	109.8	109	111.9	118.5	121.5	119.4	118.1	122.8	132.2	129	124.9	119.4
2018	110	105.3	107.7	114.9	113.8	117.8	117.1	120.8	125.1	119.5	118.4	111.1
2019	107.6	105.8	109.7	110.8	116.5	120.6	121.9	125	129.2	125.8	124.3	116.6
2020	111	112	111.5	104.5	112.7	121	119	122.1	131.2	124.3	117.4	110.7
2021	101.9	103.1	102.3	108.9	111.8	119.2	118.7	128.4	128.6	130.1	114.7	110.6
2022	103.5	104.1	107.6	110	114.2	118.3	116.7	134	138.8	125.7	117.2	113.2
2023	116.9	107.2	110.3	113.3	127.8	132.3	128.8	143.7	140.5	136.8	128.5	117.3
2024	115.4	125	122.2	128.4	131.3	141	134.1	142.1	145.5	137.9	132.1	127.6

Recent technical challenges

- ▶ 10 blackouts in the past 5 years (2019 – 2023) due to grid protection system
- ▶ Insufficient capacity due to sudden demand growth and climatological changes
- ▶ Challenges with aging infrastructure
- ▶ Cyber attack in November 2023
- ▶ Non-Revenue



Revolutionizing energy management



Our strategies



AQUALECTRA

Our strategies

- ▶ Investing in renewable energy
- ▶ Modernizing our grid
- ▶ Empowering consumers
- ▶ Championing energy efficiency
- ▶ Fostering innovation and partnerships

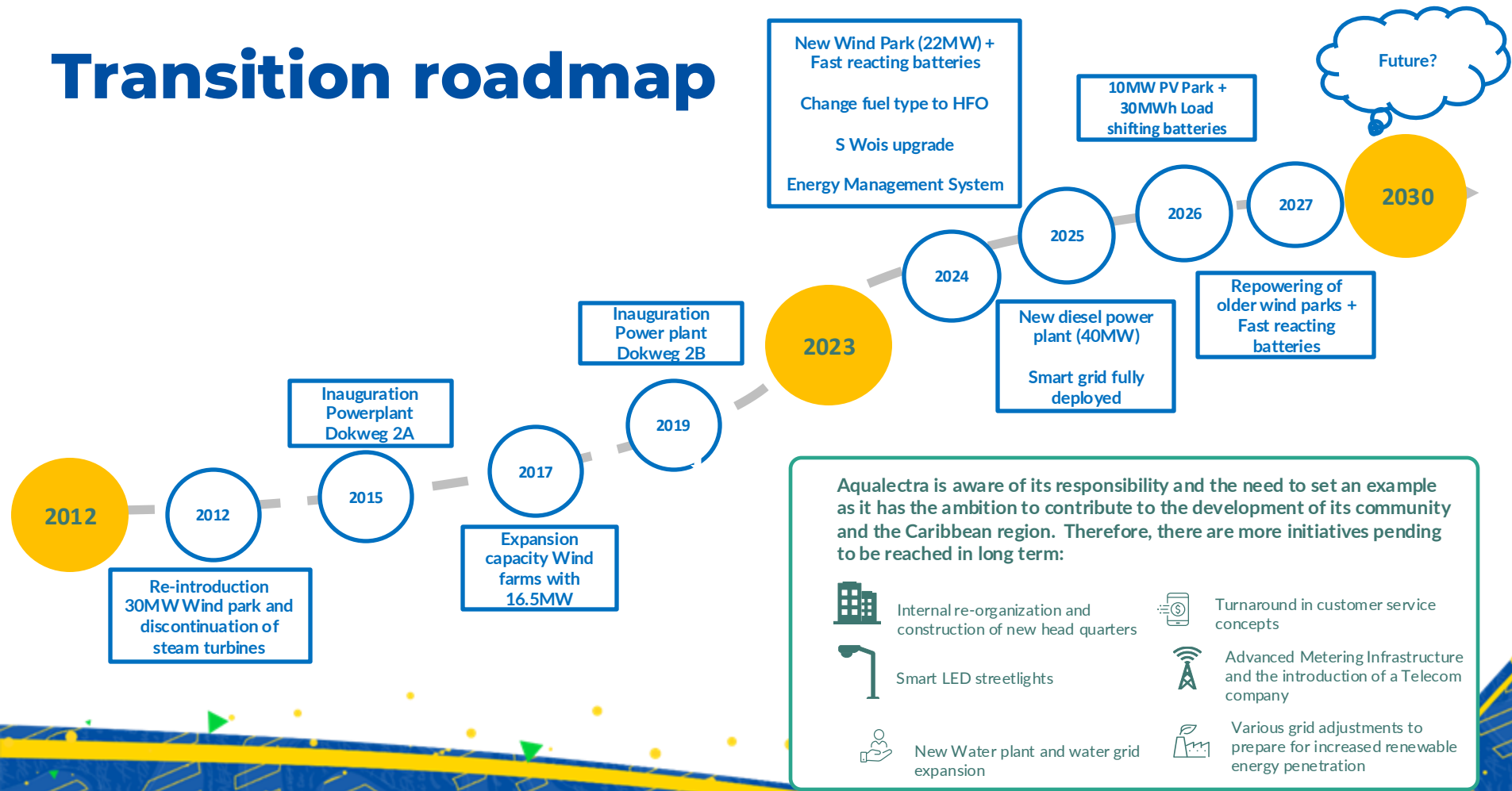


Energy transition roadmap



AQUALECTRA

Transition roadmap



2012

ELECTRICITY PRODUCTION:

Total demand: 715 GWh

Penetration green energy: 9%

Total imported fuel for electricity production:
244,911 MT

Total imported fuel for mobility:
167,540 MT

2023

ELECTRICITY PRODUCTION:

Total demand: 722 GWh

Penetration Green energy: +/- 30%

Total imported fuel for electricity production:
177,172 MT

Total imported fuel for mobility:
149,296 MT

2027

ELECTRICITY PRODUCTION:

Total demand: 796 GWh

Penetration Green energy: >70%

Total imported fuel for electricity production:
109,687 MT

Total imported fuel for mobility:
111,972 MT

In 15 years' time we will have...

increased our renewable penetration from 9% to 70%

lowered our fuel intake with 55%, despite a growth in sales of 11%

Structurally lowered our tariffs by 10-20%

Final remarks and questions





Fundamentally contribute to the wellbeing of the citizens of Curacao

Through reliable, affordable and sustainable services



AQUALECTRA