



## ► A self-assessment method for social dialogue institutions: **SAM-SDI**

### What is the SAM-SDI?

The SAM-SDI is a new tool developed by the ILO to enable social dialogue institutions in member States to strengthen their influence and impact on policy-making.

### Who is the SAM-SDI for?

The tool guides ILO constituents and their partners through a detailed self-assessment of their social dialogue institutions. The ILO is ready to provide support in applying the method.

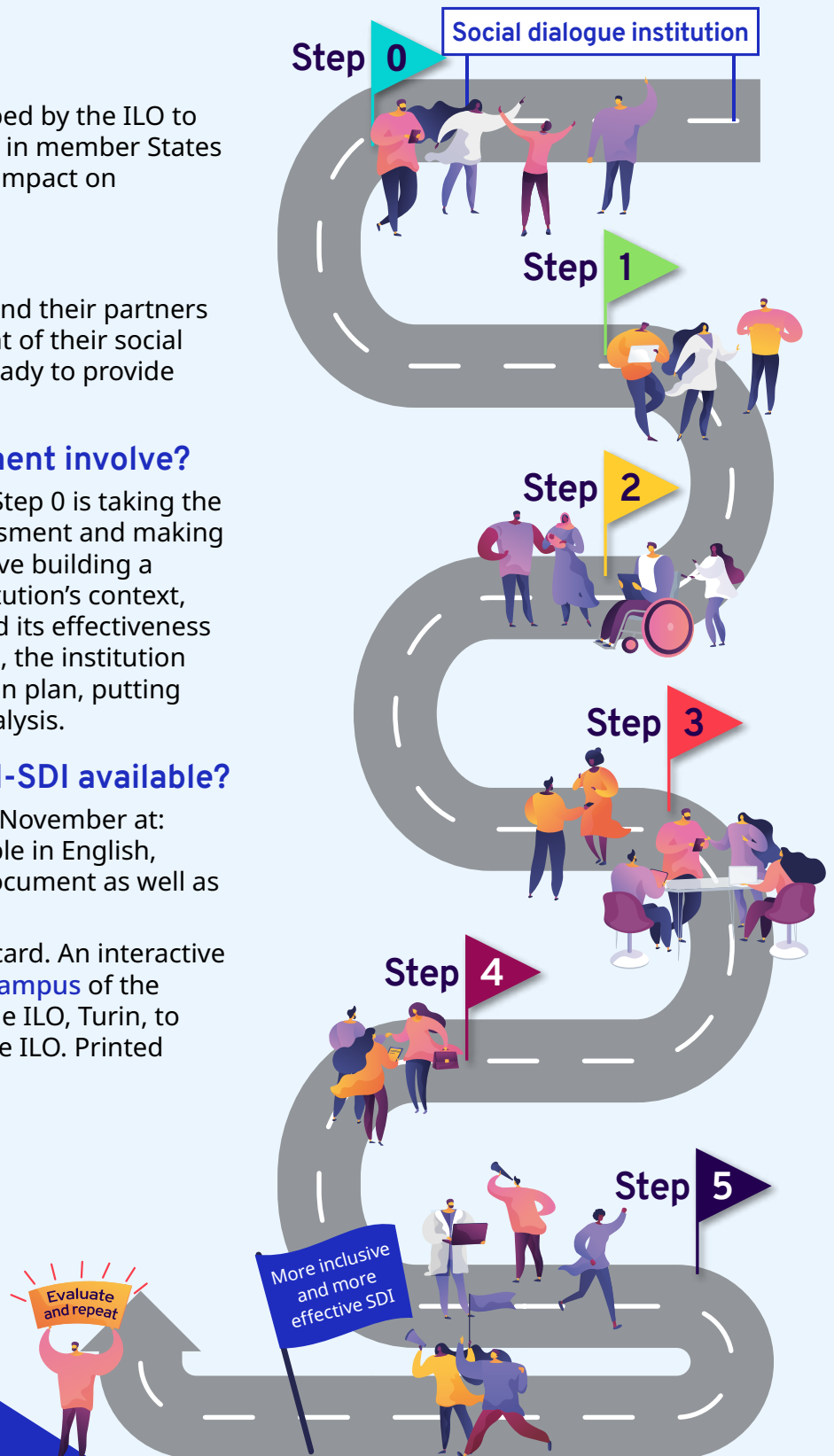
### What does the self-assessment involve?

The method comprises six steps. Step 0 is taking the decision to undertake a self-assessment and making preparations. The next steps involve building a shared understanding of the institution's context, and exploring its inclusiveness and its effectiveness (Steps 1, 2 and 3). In Steps 4 and 5, the institution prepares and implements an action plan, putting into practice the findings of its analysis.

### Where and when is the SAM-SDI available?

The SAM-SDI will be posted on 15 November at: [ilo.org/socialdialogue](https://ilo.org/socialdialogue). It is available in English, French and Spanish, as a single document as well as a series of booklets.

It will also be produced on a USB card. An interactive version will be available on the **eCampus** of the International Training Centre of the ILO, Turin, to which access will be granted by the ILO. Printed copies are available upon request.



For further information and assistance regarding the SAM-SDI, please send an email to: [dialogue@ilo.org](mailto:dialogue@ilo.org)